

What's in the Box?

1. The RP 420E Remote Panel
2. Mounting frame
3. Bag with fastening material
4. RJ45 Connector (IP rated)
5. This Quick Installation Guide



Caution!

Handle with care when opening the bag and installing the unit.

User Interface Basics

Instrument Pages Layout

Configurable gauges. Status bar on top of the screen and soft buttons at the bottom.



Home & Alarm

buttons located at the upper right side of the panel.



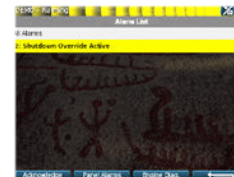
Start & Stop Engine

buttons located at the lower right side of the panel.



Alarm List

Red: Alarms/Shutdowns
 Yellow: Warnings
 White: J1939 Diagnostics
 Bold: Unconfirmed



Menu

The Menu hierarchy. There may be several RP panels in a network but only one is in control. This is indicated by a star (★).



Quick Installation Guide

RP 420E Remote Panel

P/N 1006484



Highlights

- Plug & Play with up to 2 400/200 Series DCU's
- IACS compatible
- Touch screen with edge-to-edge glass front
- Ethernet communication for connection to network and/or DCU engine panel(s)
- Hi resolution 5.7" touch screen
- Multi Language support
- Configurable templates
- IP66/56 rated
- No programming
- Easy expansion with networked panels

Specifications

Measurements

Section	Width	Height	Depth	Unit
Size	162	130	67	mm
Cut-out	155	123	90	mm

Power Ratings

Section	Min.	Typ.	Max.	Unit
Power	8	12/24	32	VDC
Supply	-	0.4	2	A

Rear Side Connectors



C1:	C2:	C3:	C4:
Power CAN, RIO	All Faults		

Responsibilities

It is the sole responsibility of the installer to ensure that the installation work is carried out in a satisfactory manner and meet all applicable rules and regulations.

Installation

This Remote Panel is designed to work together with one or more DCUs and its main purpose is to control the DCU from a remote location.

1. Remove the unit from the ESD bag.
2. Use the submitted mounting frame and fastening material to install the panel in a suitable enclosure.
3. Attach the Power Supply connector (CON1) and make sure the power ratings are within product specifications.
4. Use additional sealed DT connectors and the submitted RJ45 Connector kit to ensure the IP rating.
5. Connect additional connections required for your installation.

Note

Auto-Maskin continuously upgrades its products and reserves the right to make changes and improvements without prior notice.

Configuration

At the first Power-Up the user will be guided through a Setup Wizard:

1. Language selection and your choice is valid through the rest of the procedure.
2. Network settings. Make sure to follow common network configuration practice and take care when several units need to operate within the same network.

PC Connection/Setup:

- Connect via Ethernet using a Net Browser
- From the Address Field in the Browser, type the IP-Address. Factory Default is 192.168.0.201.
- Then log in to the unit. The Factory Default password is '1234'. (No User Name).

For more information, see the **400 Series Manuals**.

Documentation

Visit Auto-Maskin at www.auto-maskin.com for additional information.