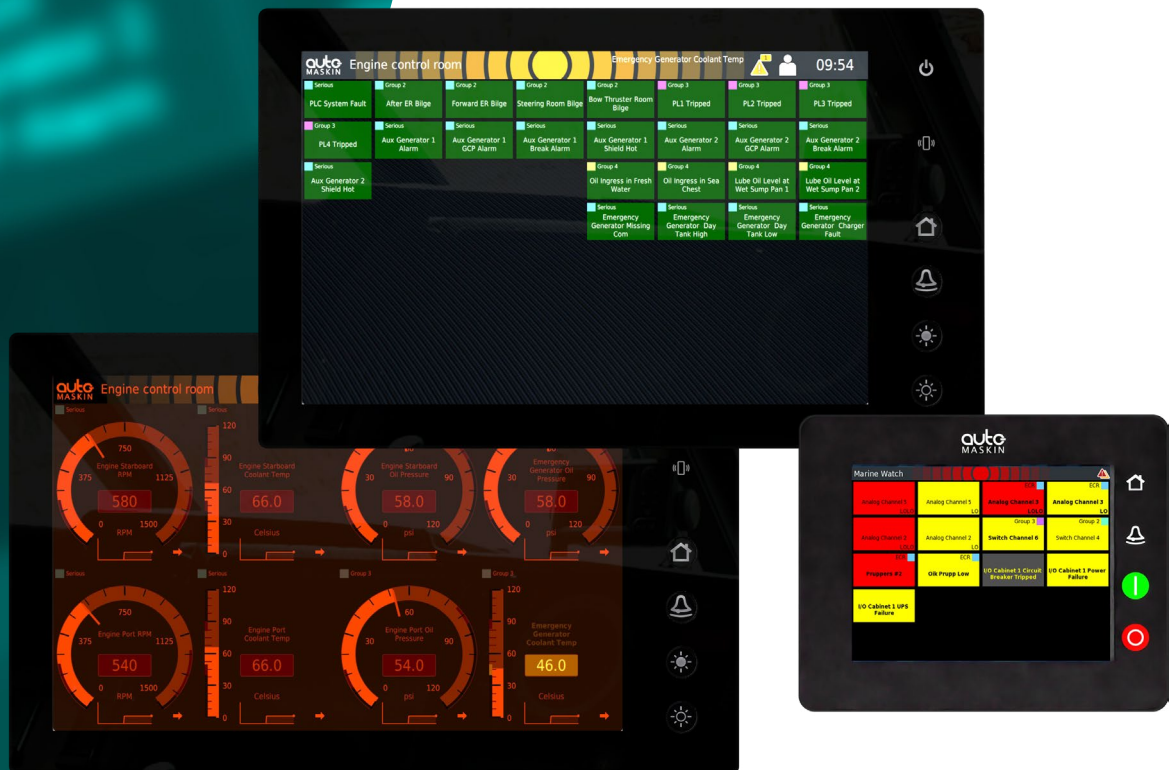


Marine Watch S Series

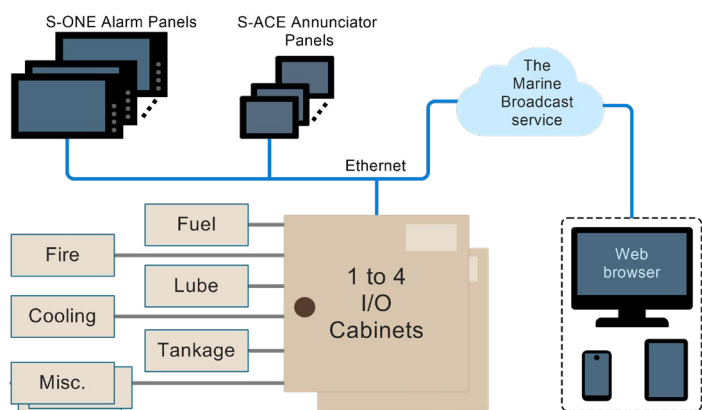
Classed Vessel Alarm System



The smarter alarm system

The Marine Watch S Series is a cyber secure and type approved alarm system with a user-friendly operator interface providing instant recognition of vessel status.

- Large touchscreen and clear graphics gives precise information and safe decision making
- Self-configuring panels
- Distributed I/O
- SMS / email alarms and events
- Up-and-running in hours, not days



Modular and scalable

The system architecture is scalable and can be used in installations with several hundreds of channels.

All digital and analogue sensor signals are connected to distributed I/O cabinet(s). All panels and I/O cabinet(s) communicate on standard Ethernet.

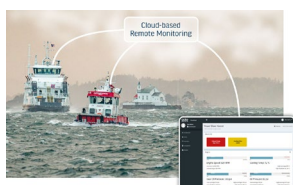
Ease of installation

The system is a breeze to install. The complete system is configured on one S-ONE Alarm Panel only, without the use of extra tools. Any other panels are automatically configured over the Ethernet network.

Marine Broadcast Remote Monitoring

- Cloud-based web access to data on connected vessels
- Sends SMS and email alerts on selected alarms
- Preinstalled in S-ONE Alarm Panels
- Free entry level

Part #: 2500622

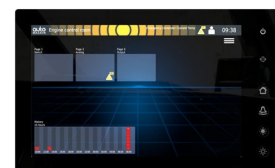


I/O Cabinet options

- Part #:
- 1500082: 12V option for S-C60 and S-C120
 - 1500083: S-UPS Intelligent UPS Power
 - 1500084: Unmanaged Ethernet Switch
 - 1500085: Managed Ethernet Switch
 - 1500086: S-DMO Door-mounted S-ONE
 - 1500087: S-DO8 Eight Digital Outputs
 - 1500090: S-AI8 Eight Analogue Inputs

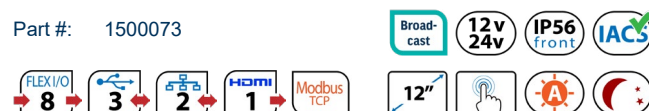
S-ONE Alarm Panel

- Swipe and touch screen, clear graphics and intuitive design
- Alarmlist and timestamped event log
- Install as many panels as needed
- Unattended engine room with watch transfer function
- Dead man alarm for engine room
- Selection of themes and day/night modes



WxHxD: 333x202x51 mm
13.1x8.0x2.0 in

Part #: 1500073



S-ACE Annunciator Panel

- Configured automatically when connected to the Ethernet
- Apply filter to see only certain groups of events
- Install as many panels as needed



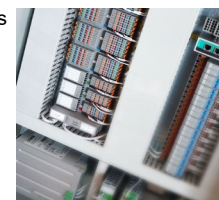
WxHxD: 167x135x68 mm
6.6x5.3x2.7 in

Part #: 1500075



S Series I/O Cabinets

- Two types: 60 or 120 switch input channels
- Support for up to four I/O cabinets in each S Series system
- Optionally, install an S-ONE in the I/O cabinet door
- Add more I/O types from the options list



WxHxD: 600x600x210 / 600x800x210 mm
23.6x23.6x8.3 / 23.6x31.5x8.3 in

Part #:

- 1500080: S-C60 I/O Cabinet
- 1500081: S-C120 I/O Cabinet



* 2 x S-AI8 gives a total of 16 flexible analogue input channels.
* 2 x S-DO8 gives a total of 16 digital output channels.



Sales EMEA and Asia

Phone: (+47) 64 84 52 00
Email: sales@auto-maskin.com

Sales North and South America

Phone: +1 (832) 738-1024
Email: sales.us@auto-maskin.com

Managing Energy

www.auto-maskin.com