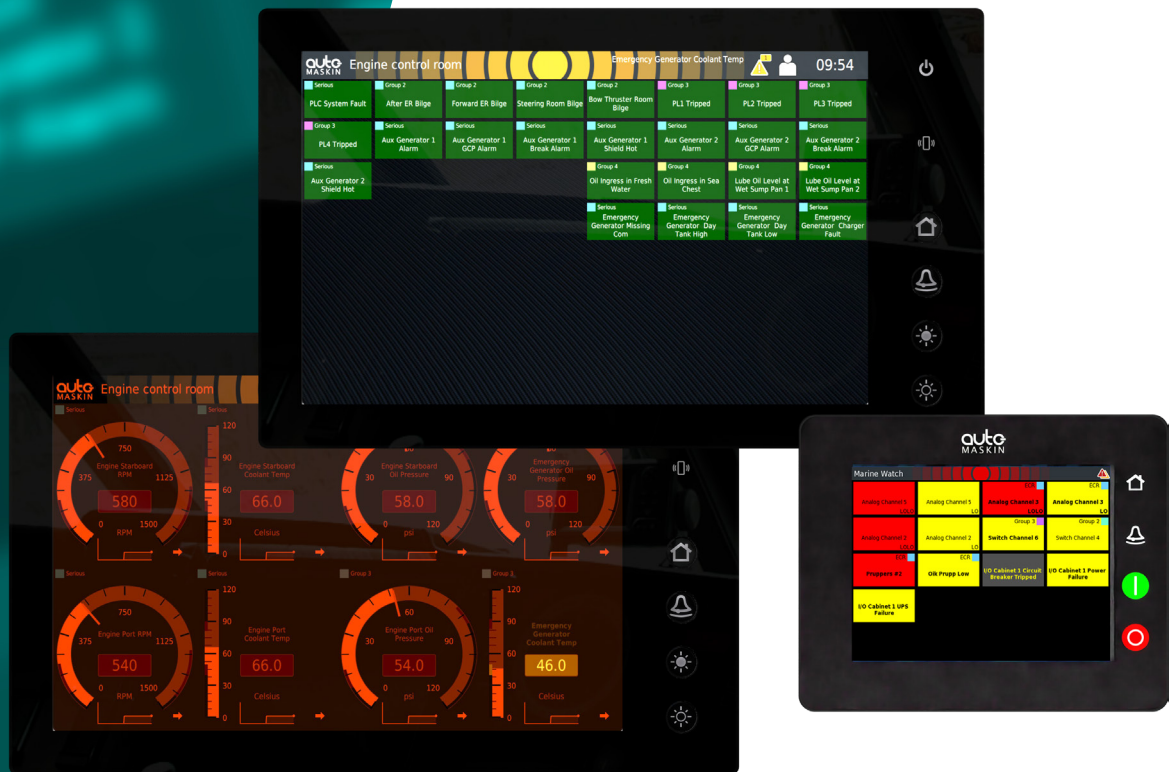


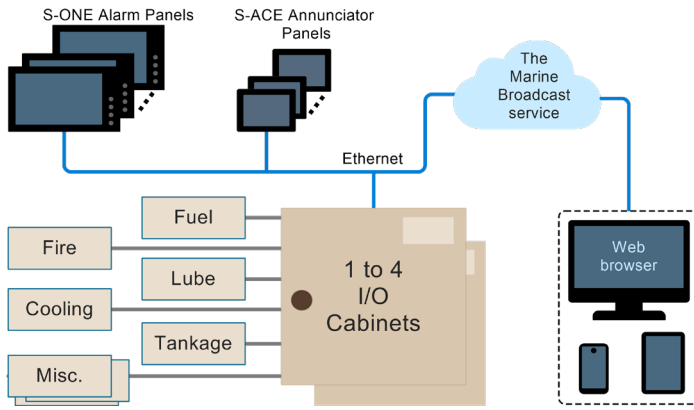
Marine Watch S Series Classed Vessel Alarm System



The smarter alarm system

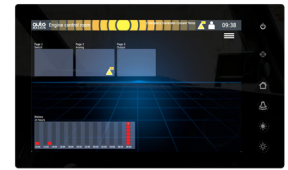
The Marine Watch S Series is a type approved alarm system with a user-friendly operator interface providing instant recognition of vessel status.

- Large touchscreen and clear graphics gives precise information and safe decision making
- Self-configuring panels
- Distributed I/O
- SMS / email alarms and events
- Up-and-running in hours, not days



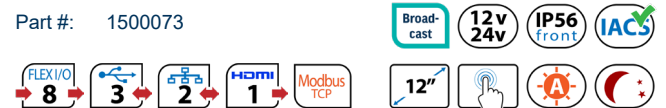
S-ONE Alarm Panel

- Swipe and touch screen, clear graphics and intuitive design
- Alarmlist and timestamped event log
- Install as many panels as needed
- Unattended engine room with watch transfer function
- Dead man alarm for engine room
- Selection of themes and day/night modes



WxHxD: 333x202x51 mm
13.1x8.0x2.0 in

Part #: 1500073



Modular and scalable

The system architecture is scalable and can be used in installations with several hundreds of channels.

All digital and analogue sensor signals are connected to distributed I/O cabinet(s). All panels and I/O cabinet(s) communicate on standard Ethernet.

Ease of installation

The system is a breeze to install. The complete system is configured on one S-ONE Alarm Panel only, without the use of extra tools. Any other panels are automatically configured over the Ethernet network.

S-ACE Annunciator Panel

- Configured automatically when connected to the Ethernet
- Apply filter to see only certain groups of events
- Install as many panels as needed



WxHxD: 167 x 135 x 68 mm
6.6 x 5.3 x 2.7 in

Part #: 1500075



Marine Broadcast Remote Monitoring

- Cloud-based web access to data on connected vessels
- Sends SMS and email alerts on selected alarms
- Preinstalled in S-ONE Alarm Panels
- Free entry level



Part #: 2500622

S Series I/O Cabinets

- Two types: 60 or 120 switch input channels
- Support for up to four I/O cabinets in each S Series system
- Optionally, install an S-ONE in the I/O cabinet door
- Add more I/O types from the options list



WxHxD: 600x600x210 / 600x800x210 mm
23.6x23.6x8.3 / 23.6x31.5x8.3 in

Part #:
1500080: S-C60 I/O Cabinet
1500081: S-C120 I/O Cabinet



* 2 x S-A18 gives a total of 16 flexible analogue input channels.
* 2 x S-DO8 gives a total of 16 digital output channels.

I/O Cabinet options

- Part #:
- 1500082: 12V option for S-C60 and S-C120
 - 1500083: S-UPS Intelligent UPS Power
 - 1500084: Unmanaged Ethernet Switch
 - 1500085: Managed Ethernet Switch
 - 1500086: S-DMO Door-mounted S-ONE
 - 1500087: S-DO8 Eight Digital Outputs
 - 1500090: S-A18 Eight Analogue Inputs



Sales EMEA and Asia

Phone: (+47) 64 84 52 00
Email: sales@auto-maskin.com

Sales North and South America

Phone: +1 (832) 738-1024
Email: sales.us@auto-maskin.com