

### What's in the Box?

1. DCU 305 Engine Controller
2. RK-66 Interface Module
3. Two connector cables
4. Fastening material
5. Quick Installation Guide



### Caution!

Handle with care when opening the bag and installing the units.

### User Interface Basics

#### Instrument Page

Bar graph gauges and Status bar.



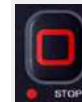
#### Start Engine

Press and hold the Start Button for manual start.



#### Stop Engine

Briefly hold the Stop Button until activated - indicated by the LED.

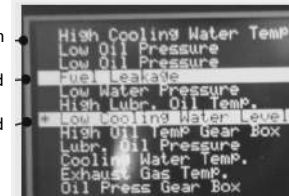


#### Alarm List

Press Alarm List Button:



- No alarm
- Acknowledged
- Unacknowledged



#### Menu/Enter/Exit

Three Modes indicated by LEDs.



#### More Information

For the latest updated information, please contact your local distributor or visit the Marine Plus 300 section at the Auto-Maskin website: <http://www.auto-maskin.com>

**auto**  
MASKIN

**Marine Plus.**  
300 Series

## Quick Installation Guide

DCU 305 R3

P/N 1006602

DCU 305 R3 LT

P/N 1006420



- 12 Switch inputs
- 5<sup>1</sup> Analogue inputs
- 2 Magnetic pickup inputs
- 4 Speed relays
- 2<sup>1</sup> Config. relays
- Prelube functionality
- Event Log
- Battery monitoring
- RPM monitoring
- Modbus RTU
- CAN/J1939 option

1) Expandable

### Specifications

#### Measurements (Main unit)

Section	Width	Height	Depth	Unit
Size	260	160	35	mm
Cut-out	230	134	60 <sup>1</sup>	mm

1) Min. required depth

#### Power Ratings

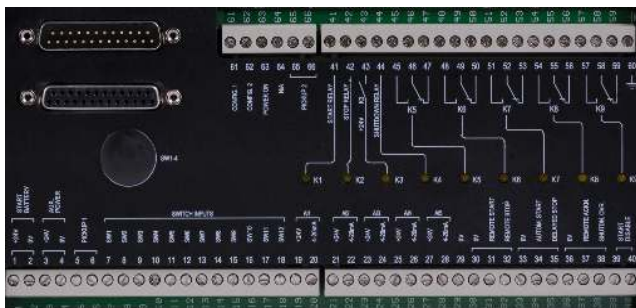
Section	Min	Typ.	Max	Unit
Power	18	24	32	VDC
Supply	-	0.5	2	A

Max ripple 10% without exceeding Min and Max values.

#### RK-66 Interface Module Connectors

The Engine Controller is powered from the RK-66 Interface Module. Also, the I/O signals are connected to the same unit.

Connectors P1 & P2 to Engine Controller	Config MPU 1 & 2	2	Relays K1-9
---	------------------	---	-------------



Power MPU	Switch input	Analogue input	Remote Control
1	1-12	1-5	

#### Responsibilities

It is the sole responsibility of the installer to ensure that the installation work is carried out in a satisfactory manner and meet all applicable rules and regulations.

### Installation

- Wire all external connections to the RK-66 Interface Module:
  - Power
  - Switch inputs
  - Magnetic pickup(s)
  - Analogue inputs
  - Relays
  - Remote controls
- Determine the DIP switch 1-4 settings behind the RK-66 rubber lid for power and noise reduction options.
- Install the Engine Controller in the cut-out using the submitted fastening material and tighten sufficiently.
- Connect the cables P1 and P2 between the Main unit and the RK-66 module.

For further details and information, please see the **Installation Manual**.

#### Note

Auto-Maskin continuously upgrades its products and reserves the right to make changes and improvements without prior notice.

### Configuration

The DCU must be configured using a Windows PC with the Rudolf Configuration Software for DCU 305 R3 installed. This software can be downloaded from the Auto-Maskin Website: <https://www.auto-maskin.com/prod/rudolf-configuration-software-dcu-305>

The PC and the DCU (P3) connects together using an RS-232/Rudolf Cable. If no COM port is available at the PC, then a USB-adaptor must be used. Note that these cables are not included in this kit.

After a successful connection, every single I/O and information necessary for your setup must be configured in the different Rudolf Configuration Software sections:

- Main
- Speed Relays
- Switch inputs
- Battery
- Analogue inputs
- Information
- Standby Operation
- Relays
- Prelube
- Service
- Speed Sensor
- SPN Alarms (optional)

Finally, at the rear side of the Engine Controller, set the Backup System Settings as advised by the Configuration software.

For further details and information, please see the **Rudolf Configuration Tool Manual**.

#### Additional Documentation

Please visit the Auto-Maskin website <http://www.auto-maskin.com> for additional documentation about the product.