

## User Interface Basics

The SDU is designed to work in conjunction with a DCU. Most of the configuration and information will be managed through the DCU. Below is a short description of the indicators and buttons on the unit itself.

### What's in the Box?

1. SDU 404 in an ESD Bag
2. Bag with 1 Resistor (120Ω)
3. Bag with 12 Resistors (10kΩ)
4. Quick Installation Guide



### Caution!

Handle with care when opening the bag and installing the unit.

### Power Indicator

Steady On: Power Supply OK  
Flashing: Power below threshold.



POWER

### Status Indicators

Lit or flashing in different colors according to status as indicated. Further details see Users' Manual.



RUNNING



OVERSPEED



SHUTDOWN



SHUTDOWN OVERRI



LOAD REDUCTION



CONFIG



SW 4



SW 3



SW 2



SW 1

### Switch Input Indicators

Flashing: Unacknowledged  
Lit: Acknowledged



SHUTDOWN OVERRI



ACK.



MPU

### Other Input Indicators

Lit Green: When Active  
Flashing: Unacknowledged  
Lit Amber: Fault Acknowledged



SHUTDOWN OVERRI



ACK.



MPU

### Acknowledge Button

Flashing status LED's can be acknowledged by pressing the Acknowledge Button.

ACK.

### Overspeed Test Button

Test mode to initiate Shutdown at 95% of Nominal set-point.

OVERSPEED TEST

### For More Information:

For the latest updated information, please contact your local distributor or visit the Marine Pro 400 section of the Auto-Maskin web site:

<http://www.auto-maskin.com>



**Marine Pro.**  
400

## Quick Installation Guide

SDU 404

P/N 1006418

### Safety Shutdown Unit



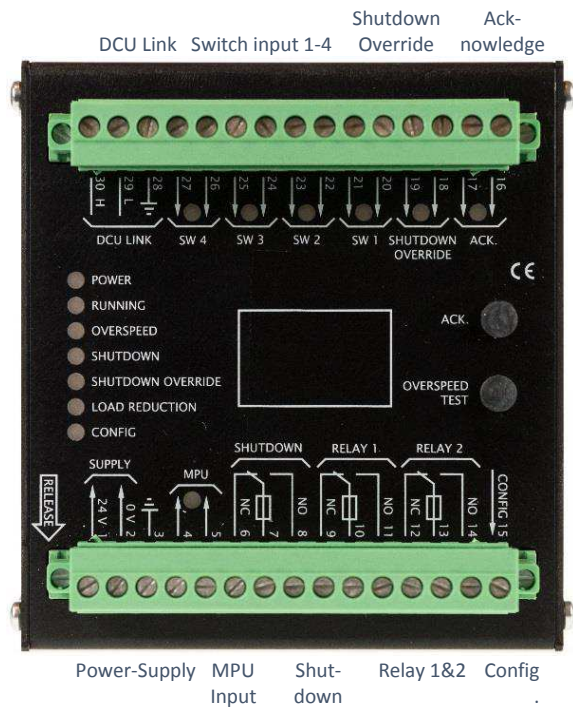
- 4 channels for switch inputs
- 8 - 32V DC power supply flexibility
- Local acknowledge/reset button
- DIN rail mounting
- 1 magnetic pickup channel
- Wire break detection with LED indication
- Overspeed test function
- Local acknowledge/reset button
- DIN rail mounting

## Measurements & Power Ratings

Section	Width	Height	Depth	Unit
Size	101	105	52	mm
Section	Min	Typ.	Max	Unit
Power	18	24	32	VDC
Supply, Vcc	200	300	600	mA

Max ripple 10% without exceeding Min and Max values.

## Front side and Connectors



## Responsibilities:

It is the sole responsibility of the installer to ensure that the installation work is carried out in a satisfactorily manner and meets all applicable rules and regulations.

## Installation Steps

1. Remove the unit from the ESD Bag and mount it on a DIN rail.
2. Attach the Power Supply and make sure the power ratings are within product specifications.
3. Connect additional external wires according to the specification related to the installation. This may include the following:
  - Magnetic Pickup Input
  - Shutdown- and additional external Relays
  - Acknowledge- and Shutdown Override inputs
  - Switch Inputs with wire break resistors (10k $\Omega$ ) if required
  - DCU Link with termination (120 $\Omega$ )
4. As a final stage and check of the installation - Press and hold the 'Overspeed Test' button to enter overspeed test mode until the "Overspeed" status LED starts flashing.

See the Installation Manual for further information.

## Note:

Auto-Maskin continuously upgrades its products and reserves the right to make changes and improvements without prior notice.

## Configuration Steps

The SDU is designed to be used in conjunction with a Marine Pro DCU via the two-wire DCU/SDU link. The way of configuring the SDU is to login to the DCU via the web interface and then enter the SDU section.

The following functions are configurable:

- Switch Channels for loop monitoring and short circuit detection.
- Action on Event (Shutdown/Load Reduction/Run Only)
- Time Delay (Shutdown/Load Reduction/Initial)
- Overspeed warning set point
- Input voltage set points
- Outputs/Relays on events

For further details and information, please see the 400E Series Configuration Manual.

## Additional Documentation:

Please visit the Marine Pro 400 section of the Auto-Maskin website for the following enhanced documentation:

- Installation Manual
- User's Manual.
- 400E Series Configuration Manual

<http://www.auto-maskin.com>